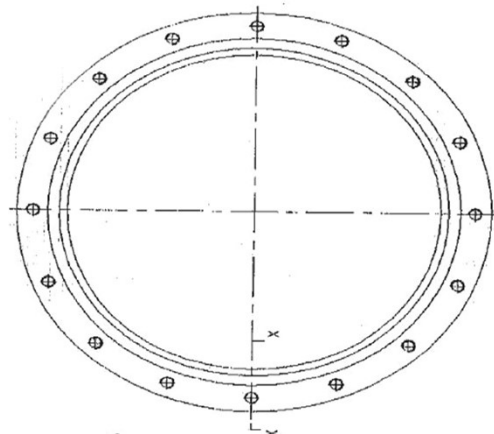
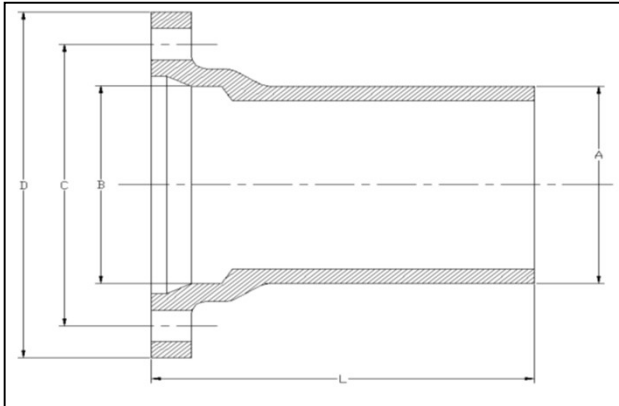


## Ductile Iron MJ x Plain End Wall Pipe



Nominal Pipe Size	A Pipe OD	B	C	D	Tapped Bolt Holes		L	
					Size	No.	24 <sup>1</sup> / <sub>4</sub>	36 <sup>1</sup> / <sub>4</sub>
3	3.96	4.06	6.19	7.69	5/8	4	P	
4	4.80	4.90	7.50	9.12	3/4	4	P	
6	6.90	7.00	9.50	11.12	3/4	6	P	
8	9.05	9.15	11.75	13.37	3/4	6	P	
10	11.10	11.20	14.00	15.69	3/4	8	P	
12	13.20	13.30	16.25	17.94	3/4	8	P	
14	15.30	15.44	18.75	20.31	3/4	10	P	
16	17.40	17.54	21.00	22.56	3/4	12	P	
18	19.50	19.64	23.25	24.83	3/4	12	P	
20	21.60	21.60	25.50	27.08	3/4	14	P	P
24	25.80	25.80	30.00	31.58	3/4	16	P	P
30	32.00	32.00	36.88	39.12	1	20	P	P
36	38.30	38.30	43.75	46.00	1	24	P	P
42	44.50	44.50	50.62	53.12	1 1/4	28	P	P
48	50.80	50.80	57.50	60.00	1 1/4	32	P	P

\*Dimensions are in inches.

- ▶ Ductile Iron (ASTM A536-65:45:12)
- ▶ MJ Bell in accordance with ANSI A21.10 (AWWA C110)
- ▶ Class 54 pipe thickness on the barrel
- ▶ Integrally Cast MJ bell with tapped bolt holes
- ▶ Outside: Tar coated; Inside: Cement lined

**To order or for further details,  
(800) 848-6884 | orders@uvintl.com**